

## Sample Project

### Sample Company

---

#### About This Report

This report was generated by Panel Takeoff, a takeoff tool built specifically for standing seam metal roofing. Each roof facet is drawn to scale using the actual property dimensions, and panels are placed individually at the specified panel width across every facet.

The software calculates the exact cut length of every panel by tracing the real geometry of the roof - accounting for ridges, valleys, hips, rakes, eaves, headwalls, sidewalls, and transitions. Panel lengths reflect the true slope distance of each facet.

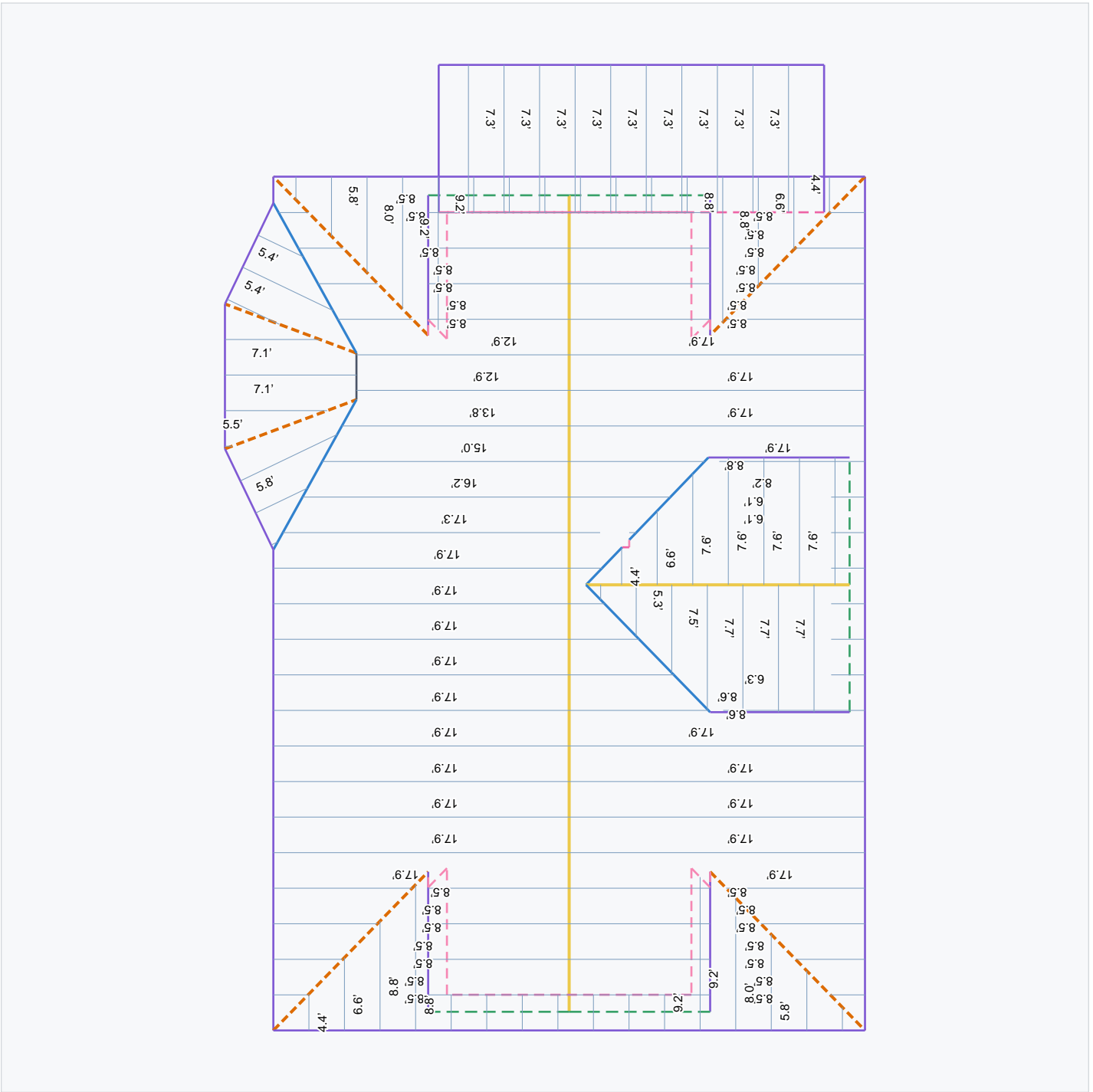
The included panel cut list is not a rule-of-thumb estimate, a percentage-based allowance, or a square-footage multiplier. It is a per-panel measurement derived directly from the drawn geometry of the roof. Every panel in the cut list represents a single piece of coil stock that will be run, cut, and installed on the roof.

This cut list can be used directly on the job site to order and cut material with no additional interpretation required. Because each panel is measured individually against the roof geometry, the material quantities in this report are more precise than traditional estimation methods and minimize both waste and shortages.

Each 24-in. coil forms a panel with 21.125 in. of net flat coverage. The remaining 2.875 in. is consumed by the raised seam legs - the interlocking male and female seams on each panel edge. Because more raw coil is used than the area covered, Panel LF x coil width is the correct metric for calculating roof covering material.

Sample Project

Sample Project



TOTAL AREA

**17.52 sq**

PANELS

**148**

PANEL LF

**1,174.6 LF**

METAL SQ

**23.49 sq**

PANEL CUT LIST

Sample Project

**FACET A**

Facet 1

A-1	2.2 LF
A-2	8.6 LF
A-3	8.6 LF
A-4	8.6 LF
A-5	8.6 LF
A-6	8.6 LF
A-7	8.6 LF
A-8	8.6 LF
A-9	18.0 LF
A-10	18.0 LF
A-11	18.0 LF
A-12	18.0 LF
A-13	18.0 LF
A-14	8.7 LF
A-15	8.5 LF
A-16	6.4 LF
A-17	6.4 LF
A-18	4.3 LF
A-19	4.3 LF
A-20	2.2 LF
A-21	2.2 LF
A-22	2.1 LF
A-23	2.1 LF
A-24	2.1 LF
A-25	2.0 LF
A-26	2.1 LF
A-27	6.2 LF
A-28	8.9 LF
A-29	8.9 LF
A-30	18.0 LF
A-31	18.0 LF
A-32	18.0 LF
A-33	18.0 LF
A-34	8.6 LF
A-35	8.6 LF
A-36	8.6 LF
A-37	8.6 LF
A-38	8.6 LF

PANEL CUT LIST

**Sample Project**

A-39	8.6 LF
A-40	8.6 LF
A-41	8.6 LF
<b>Total - Facet A</b>	<b>371.3 LF</b>

**FACET B**

Facet 8

B-1	5.2 LF
B-2	7.2 LF
B-3	7.2 LF
B-4	5.6 LF
B-5	0.5 LF
<b>Total - Facet B</b>	<b>25.8 LF</b>

**FACET C**

Facet 2

C-1	8.6 LF
C-2	8.6 LF
C-3	8.6 LF
C-4	8.6 LF
C-5	8.6 LF
C-6	8.6 LF
C-7	8.6 LF
C-8	8.6 LF
C-9	18.0 LF
C-10	18.0 LF
C-11	18.0 LF
C-12	18.0 LF
C-13	18.0 LF
C-14	18.0 LF
C-15	18.0 LF
C-16	18.0 LF
C-17	18.0 LF
C-18	18.0 LF
C-19	17.4 LF
C-20	16.2 LF
C-21	15.0 LF
C-22	13.9 LF
C-23	13.0 LF

PANEL CUT LIST

**Sample Project**

C-24	13.0 LF
C-25	8.6 LF
C-26	8.6 LF
C-27	8.6 LF
C-28	8.6 LF
C-29	8.6 LF
C-30	8.6 LF
C-31	8.6 LF
C-32	1.9 LF
C-33	0.1 LF
<b>Total - Facet C</b>	<b>399.9 LF</b>

**FACET D**

Facet 7

D-1	2.3 LF
D-2	4.5 LF
D-3	6.7 LF
D-4	7.7 LF
D-5	7.7 LF
D-6	7.7 LF
D-7	7.7 LF
D-8	7.7 LF
<b>Total - Facet D</b>	<b>52.0 LF</b>

**FACET E**

Facet 3

E-1	7.4 LF
E-2	7.4 LF
E-3	7.4 LF
E-4	7.4 LF
E-5	7.4 LF
E-6	7.4 LF
E-7	7.4 LF
E-8	7.4 LF
E-9	7.4 LF
E-10	7.4 LF
E-11	7.4 LF
<b>Total - Facet E</b>	<b>81.2 LF</b>

PANEL CUT LIST

Sample Project

**FACET F**

Facet 5

F-1	2.3 LF
F-2	4.5 LF
F-3	6.7 LF
F-4	8.8 LF
F-5	8.8 LF
F-6	2.2 LF
F-7	2.2 LF
F-8	2.2 LF
F-9	2.2 LF
F-10	2.2 LF
F-11	2.2 LF
F-12	9.3 LF
F-13	9.3 LF
F-14	8.0 LF
F-15	5.9 LF
F-16	3.7 LF
F-17	1.5 LF
<b>Total - Facet F</b>	<b>82.1 LF</b>

**FACET G**

Facet 6

G-1	7.7 LF
G-2	7.7 LF
G-3	7.7 LF
G-4	7.7 LF
G-5	7.6 LF
G-6	5.4 LF
G-7	3.2 LF
G-8	1.0 LF
<b>Total - Facet G</b>	<b>48.0 LF</b>

**FACET H**

Facet 9

H-1	2.8 LF
H-2	5.5 LF

PANEL CUT LIST

**Sample Project**

H-3	5.5 LF
H-4	3.2 LF
<b>Total - Facet H</b>	<b>16.9 LF</b>

**FACET I**

Facet 10

I-1	5.8 LF
I-2	5.8 LF
I-3	3.2 LF
I-4	0.5 LF
<b>Total - Facet I</b>	<b>15.3 LF</b>

**FACET J**

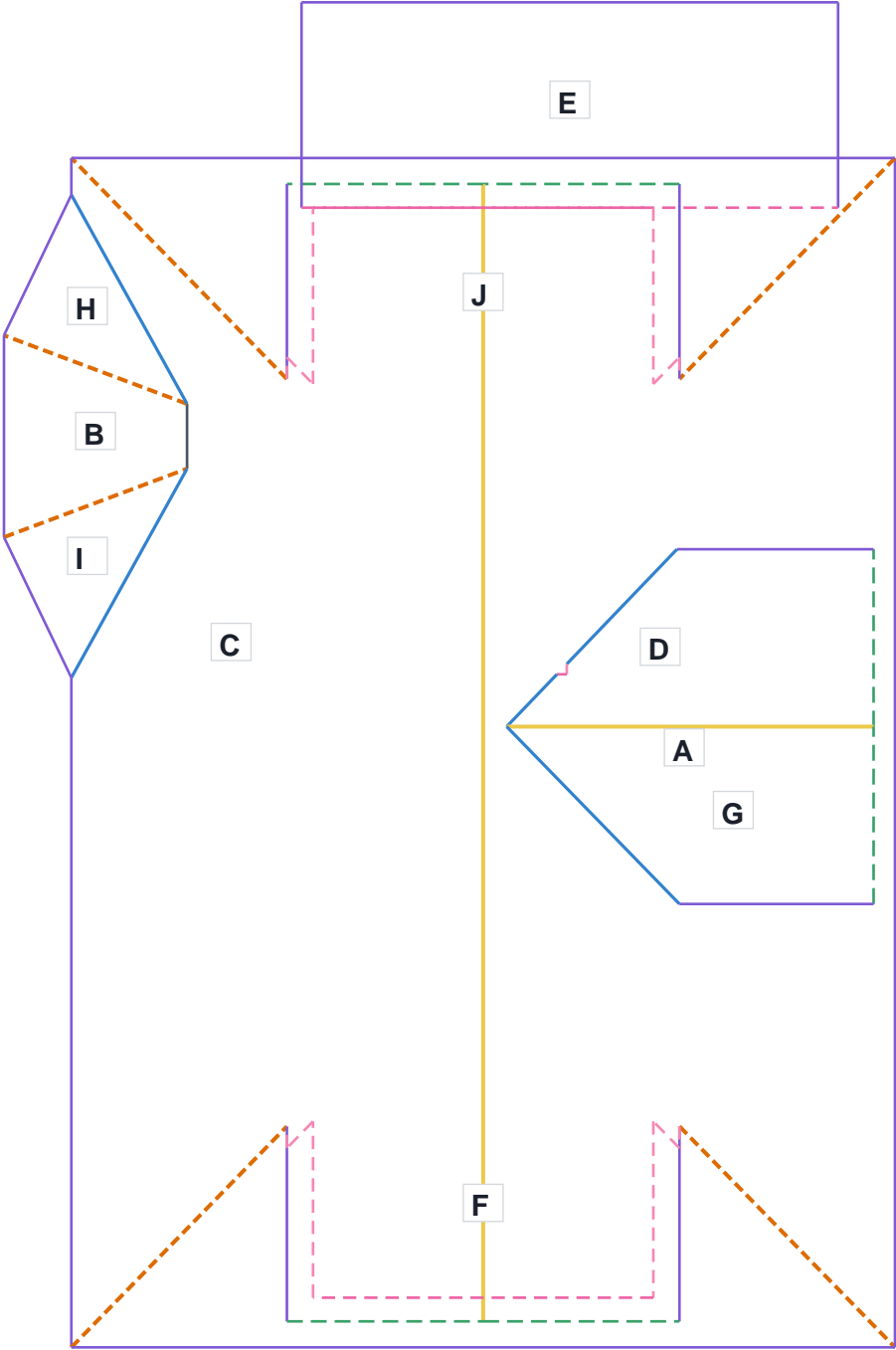
Facet 4

J-1	2.3 LF
J-2	4.5 LF
J-3	6.7 LF
J-4	8.8 LF
J-5	8.8 LF
J-6	2.2 LF
J-7	2.2 LF
J-8	2.2 LF
J-9	2.2 LF
J-10	2.2 LF
J-11	2.2 LF
J-12	9.3 LF
J-13	9.3 LF
J-14	8.0 LF
J-15	5.9 LF
J-16	3.7 LF
J-17	1.5 LF
<b>Total - Facet J</b>	<b>82.1 LF</b>



Sample Project

Sample Project - Facet Map



## Disclaimer

---

This report is generated based on the measurement data provided in the uploaded ESX/CAD file. The accuracy of all calculations, material quantities, and dimensions is entirely dependent on the accuracy of the source measurement file.

Panel Takeoff does not independently verify roof measurements, building dimensions, or any other data contained in the source file. Any errors, omissions, or inaccuracies in the original measurement data will be reflected in this report.

This report is intended as a planning and takeoff tool only. It should not be used as the sole basis for material purchasing or construction decisions without independent verification of all measurements and quantities.

Panel Takeoff makes no warranties, express or implied, regarding the accuracy or completeness of this report. By using this report, you acknowledge that Panel Takeoff is not liable for any discrepancies between the reported values and actual field conditions.